

REGISTRATION

Family Name: _____

First Name: _____

Titles and Initials: _____

Organisation: _____

Address: _____

Country: _____

E-Mail: _____

Telephone: _____

Fax: _____

I will attend:

Morning Session

Afternoon Session

REGISTRATION

Please fill out the above details and email or fax the registration form to the Plaxis Asia office.

Email: e.tan@plaxis.nl

Fax: +65 6271 6066

COST

Participation in the meeting is free of charge. However, expenses such as traveling, lodging and dinner are at your own cost.

PLAXIS ASIA

Mr. Eddy Tan

No. 16 Jalan Kilang Timor #05-08

Redhill Forum, 159308

Singapore

Tel: +65 6325 4191

Fax: +65 6271 6066

E-mail: e.tan@plaxis.nl

LOCATION

Room 103 Ground Floor

Taipei International Convention Center (TICC)

No. 1, Sec.5, Hsin-Yi Road, Taipei 11049

Taiwan, ROC

TAIWAN CONTACT

Mr. Eddy Tan

Mobile: +886 9 7538 1542

Mr. Hsieh Yi-Cheng

Mobile +886 9 1683 5514



PLAXIS Expert Services

This course relates to Plaxis Expert Services among which we can also provide:

- In-house training
- Numerical modelling and analysis
- Review and mentoring of Plaxis projects

For information contact: expert.services@plaxis.nl or look on our website: www.plaxis.nl

PLAXIS

essential for geotechnical professionals



PLAXIS 3D WORKSHOP

13 May 2010, Taipei, Taiwan

PLAXIS 3D WORKSHOP

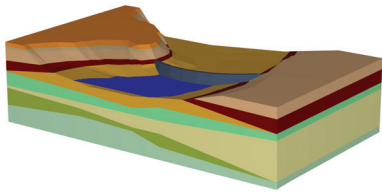
13 May, Taipei, Taiwan

INTRODUCTION

After the commercial launch of PLAXIS 3D at the 17th ICSMGE in Alexandria, Egypt early October, and the technical launch of PLAXIS 3D in Karlsruhe Germany November 2009, we now invite you to the Asian Launch of PLAXIS 3D.

Alongside the more official part of the meeting, participants will have the opportunity to informally exchange experiences with other users.

An important aspect of these meetings is the interaction between users and developers, which is vital for current and future Plaxis developments. Besides these traditional activities the users will also have the opportunity to get acquainted with the new PLAXIS 3D program.



PLAXIS 3D is a finite element package intended for three-dimensional analysis of deformation and stability in geotechnical engineering. Geotechnical applications require advanced constitutive models for the simulation of the non-linear, time-dependent and anisotropic behaviour of soils and/or rock.

In addition, since soil is a multi-phase material, special procedures are required to deal with hydrostatic and non-hydrostatic pore pressures in the soil.

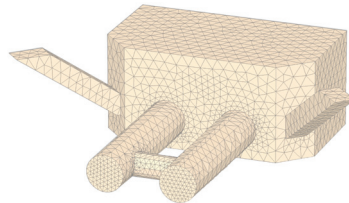
SUBJECT MATTER

The main subject of the presentations is the application of the Plaxis finite element programs in geo-engineering projects.

Applications should be primarily based on practical engineering projects, e.g. dams, embankments, excavations, foundations, tunnelling projects, infrastructural projects, offshore applications, etc. Moreover, we also welcome presentations on research projects or user-defined soil models with emphasis on the practical application.

FORMAT

The day consist of two equal sessions. Both sessions start off with an introduction and seminar, and continue with a hands-on session



Although the modelling of the soil itself is an important issue, many projects involve the modelling of structures and the interaction between the structures and the soil.

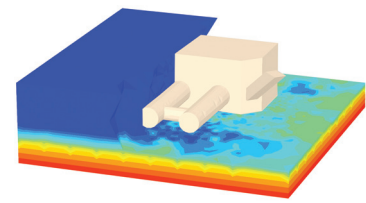
PLAXIS 3D is equipped with features to deal with various aspects of complex geotechnical structures and construction processes.

during which the participant can try out the new PLAXIS 3D program. During both the morning and afternoon sessions there will be tea breaks in which participants can have informal discussions.

17th SEAGC

Plaxis will also have an exhibition booth at the 17th South East Asian Geotechnical Conference, to be held from 10-12 May also at the Taipei International Convention Center (TICC).

The conference has a three-day in-house program consisting the Keynote, Guest and Special Lectures and Plenary and Discussion Sessions that cover through the themes of this conference. The main theme of the conference is Geo-engineering for Natural Hazard Mitigation and Sustainable Development.



Features include:

- Arbitrary 3D geometry for soil and structures
- DXF or 3DS input of geometry
- Terrain geometry input tools
- Multiple borehole wizard
- Real and easy 3D interaction
- Command line input
- Model replay function
- Advanced soil models
- User defined soil models
- 64 bit calculation kernel
- Convenient construction stage definition

SESSIONS:

The day consist of two equal sessions and participant can choose to join the morning or afternoon session.

Both sessions start off with an introduction & seminar, and continue with a hands-on session during which the participant can try out the new PLAXIS 3D program. During both the morning and afternoon sessions there will be tea breaks in which participants can have informal discussions.

MORNING SESSION:

(9:00 - 12:30)

9:00 - 10:30 - Introduction & Seminar
10:30 - 11:00 - Tea Reception
11:00 - 12:30 - Hands-on Session

AFTERNOON SESSION:

(2:00 - 5:30)

2:00 - 3:30 - Introduction & Seminar
3:30 - 4:00 - Tea Reception
4:00 - 5:30 - Hands-on Session

SCHEDULE