

REGISTRATION

PRESENTATIONS

Participants are kindly invited to give a presentation. The official language for presentations is English. A full presentation may last 15 minutes +10 minutes of discussion (25 minutes in total for each presentation).

Participants who intend to give a presentation should indicate this with their registration. In addition, a title + author's name(s) + abstract (max. 20 lines) should be sent separately by e-mail to info@plaxis.nl, subject: European Plaxis Users Meeting 2010.

Presentations should be prepared in electronic form and brought to the meeting on a memory stick or

CD-ROM. A computer with Windows OS will be available. Self brought laptops can be connected, if necessary.

REGISTRATION AND COST

Participation in the event is free of charge, but requires registration. Registered participation includes refreshments during the breaks, a lunch on Thursday and the surprise programme on Thursday evening.

Please visit the Plaxis website at www.plaxis.nl to register. It is essential to specify your e-mail address, give your address details, indicate whether you

intend to give a presentation, and whether you will participate in the surprise programme on Thursday evening.

Please note that the number of participants for this special event is limited to 150, so early registration is recommended. After registration, participants will get a confirmation of their registration by e-mail. One week before the actual meeting, participants will get the final programme of the meeting.

LOCATION

Bundesanstalt für Wasserbau
Kußmaulstraße 17
D-76187 Karlsruhe, Germany
Tel: +49 721 9726 3170
Fax: +49 721 9726 4830
Website: www.baw.de

TRAVELLING AND LOGING

Participants should make their own travelling and lodging arrangements at own cost. Special arrangements have been made with a number of selected hotels in Karlsruhe especially for the PLAXIS Users Meeting. Please note that special price conditions have been blocked until the 28th of September. Participants may contact such a hotel

before this date and should mention 'European Users Meeting 2010' with their reservation to benefit from the special price conditions. The details of each hotel are listed below:

Renaissance Hotel ****

Approx. 1 km (3 mins) from the city centre
Rate incl. breakfast: Single room € 99
Double room € 109
www.renaissancehotels.com

Star Inn Hotel ***

Approx. 6.8 km (12 mins) from the city centre
Rate incl. breakfast: Single room € 80
Double room € 90
www.starinnhotels.com

Hotel Aviva ***

Approx. 5 km (9 mins) from the city centre
Rate incl. breakfast: Single room € 73
Double room € 89
www.hotelaviva.de

Hotel Kaiserhof ****

Located directly in the city centre
Rate: Single room € 93
Breakfast € 12 per day
www.hotel-kaiserhof.de

Register on our website
www.plaxis.nl

PLAXIS

essential for geotechnical professionals



Photo by: Dipl.-Ing. Christoph Kühlewein

EUROPEAN PLAXIS USERS MEETING 2010
10 - 12 November, Karlsruhe, Germany

EUROPEAN PLAXIS USERS MEETING 2010

10- 12 November, Karlsruhe, Germany

INTRODUCTION

The European Plaxis Users Meetings have been organized yearly since 1994. As a tradition, this year's meeting will be held again at the Bundesanstalt für Wasserbau in Karlsruhe, Germany on November 10-12, 2010.

During this three-day event, users as well as developers will give presentations on the use of the Plaxis software in geo-engineering and research projects. In addition to the presentations, time is scheduled for questions, discussions, and the generating of ideas on new developments.

Alongside the more official part of the meeting, participants will have the opportunity to informally exchange experiences with other users. An important aspect of these meetings is the interaction between users and developers, which is vital for current and future Plaxis developments.

Besides these traditional activities we will celebrate the release of the completely new PLAXIS 3D 2010 and PLAXIS 2D 2010 with a surprise programme on Thursday evening offered to you by Plaxis.

Make sure you do not miss this special event!

SUBJECT MATTER

The main subject of the presentations is the application of the Plaxis finite element programs in geo-engineering projects.

Applications should be primarily based on practical engineering projects, e.g. dams, embankments, excavations, foundations, tunnelling projects, infrastructural projects, offshore applications, etc. Moreover, we also welcome presentations on research projects or user-defined soil models, with emphasis on the practical application.

FORMAT

The meeting starts on Wednesday afternoon and ends on Friday around lunch time.

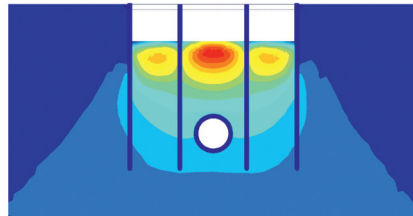
On Wednesday and Thursday morning there are presentations. Thursday afternoon will be devoted to new developments, with active user participation. The rest of the day is a surprise programme to celebrate the release of the new PLAXIS versions, offered to you by Plaxis. On Friday morning we will have additional user presentations, and we end the event with lively discussions on future ideas in geo-engineering and design.

NEW PLAXIS SOFTWARE

New PLAXIS 2D and 3D versions are now available, which overcome important limitations of previous versions.

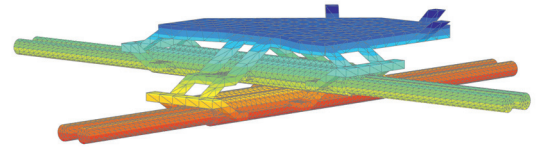
NEW IN PLAXIS 2D

- Hoek-Brown model for rock behaviour
- Anisotropic shear strength model
- Import facility for DXF files and other geometric data
- Fully coupled flow-deformation analysis
- Free vibration analysis
- Independent horizontal / vertical acceleration
- Multi threading calculation processing



NEW IN PLAXIS 3D

- Arbitrary 3D geometry for soil and structures
- Real and easy 3D interaction
- Terrain geometry input tools
- Multiple borehole wizard
- DXF or 3DS geometry import facility
- Command line input and reply function
- 64-bit calculation kernel with parallel process



WEDNESDAY, 10 NOVEMBER 2010

13:30 - 13:30	Arrival of participants
13:30 - 13:45	Introduction
13:45 - 15:25	Presentations
15:25 - 15:50	Break
15:50 - 17:30	Presentations
17:30 - 17:45	Discussion

THURSDAY, 11 NOVEMBER 2010

09:00 - 10:40	Presentations
10:40 - 11:05	Break
11:05 - 12:20	Presentations
12:20 - 12:35	Discussion
12:35 - 13:30	Lunch
13:30 - 15:15	Recent and future developments
15:15 - 15:45	Break
15:45 - 17:00	Presentation of new ideas
17:00 - 00:00	<i>Surprise programme!</i>

FRIDAY, 12 NOVEMBER 2010

09:30 - 10:45	Presentations
10:45 - 11:15	Break
11:15 - 13:00	Future ideas in geotechnical engineering
13:00	Closure

SCHEDULE